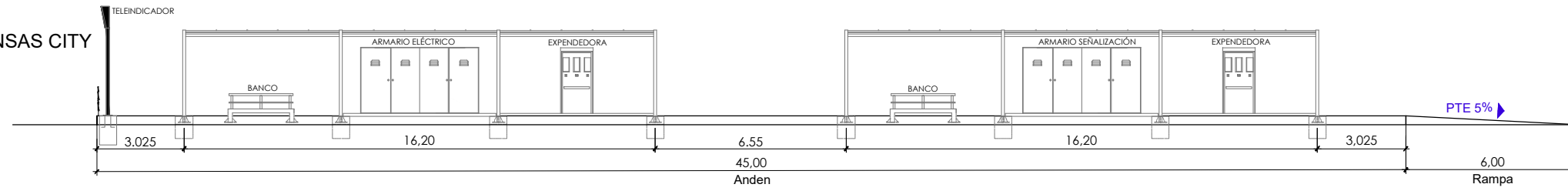
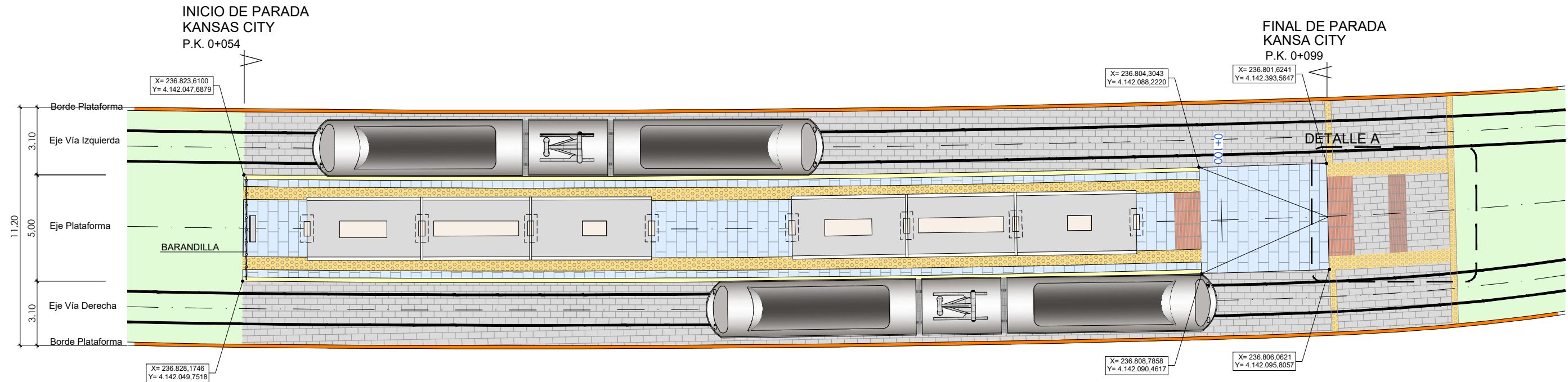


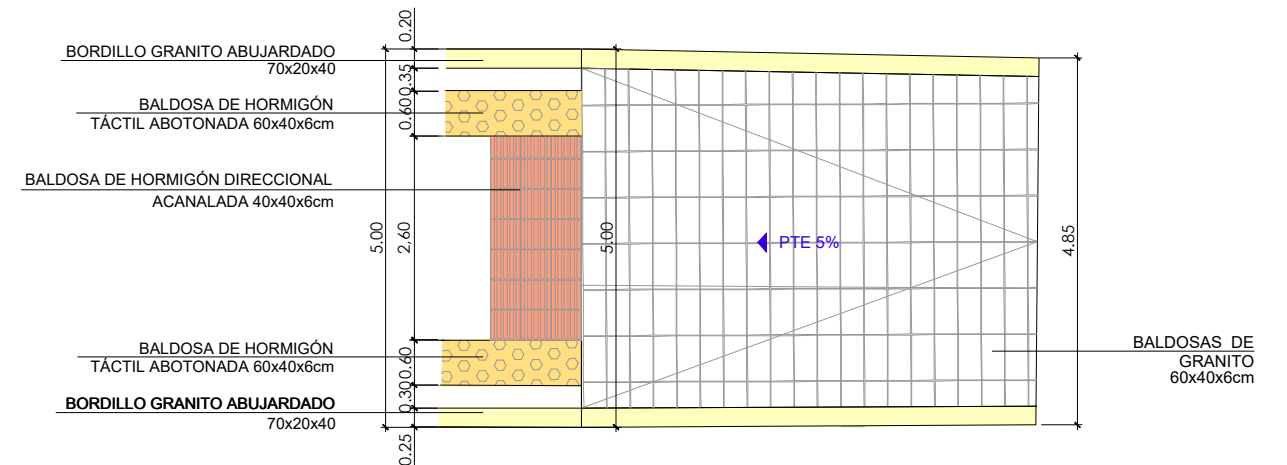
ALZADO
PARADA KANSAS CITY
 ESCALA 1/125



PLANTA
 ESCALA 1/125



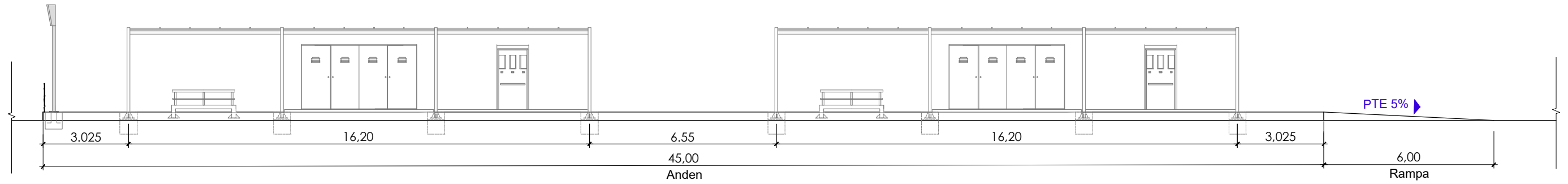
DETALLE A
 ESCALA 1/60



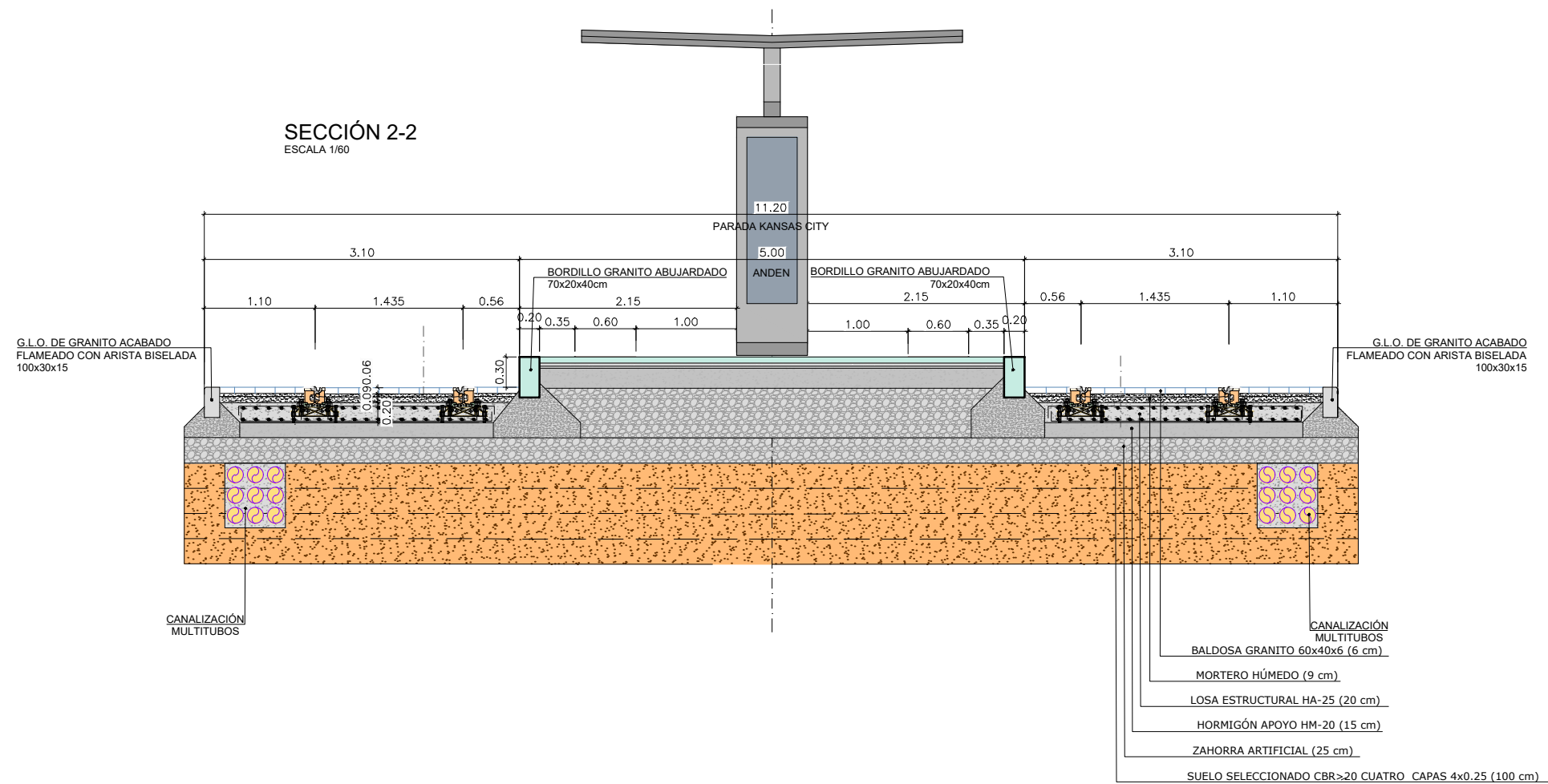
LEYENDA

- BORDILLO GRANITO ABUJARDADO 70x20x40cm
- PAVIMENTO DE BALDOSAS DE GRANITO 60x40x6cm.
- PLATAFORMA TRANVIÁRIA DE BALDOSAS DE GRANITO 60x40x6cm.

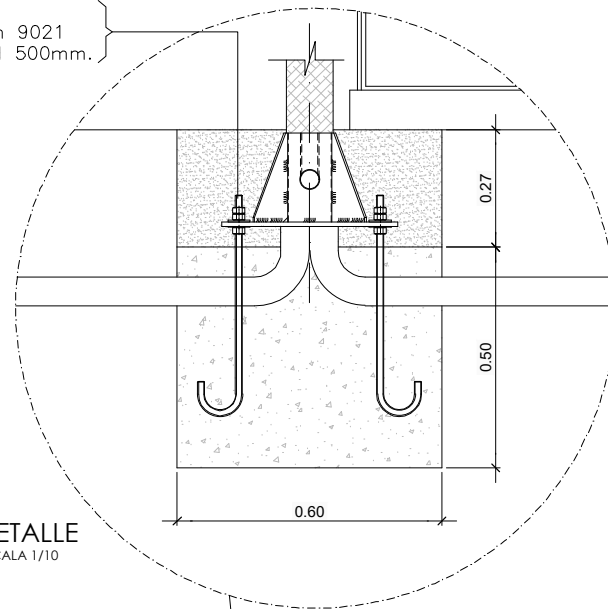
SECCIÓN 1-1
ESCALA 1/75



SECCIÓN 2-2
ESCALA 1/60



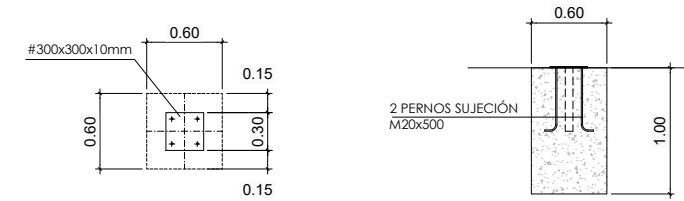
Tuercas M16 Din 934
Arandela para M16 Din 9021
Perno de M16 longitud 500mm.



DETALLE
ESCALA 1/10

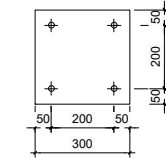
CIMENTACIÓN DE TELEINDICADORES

ESCALA 1/35

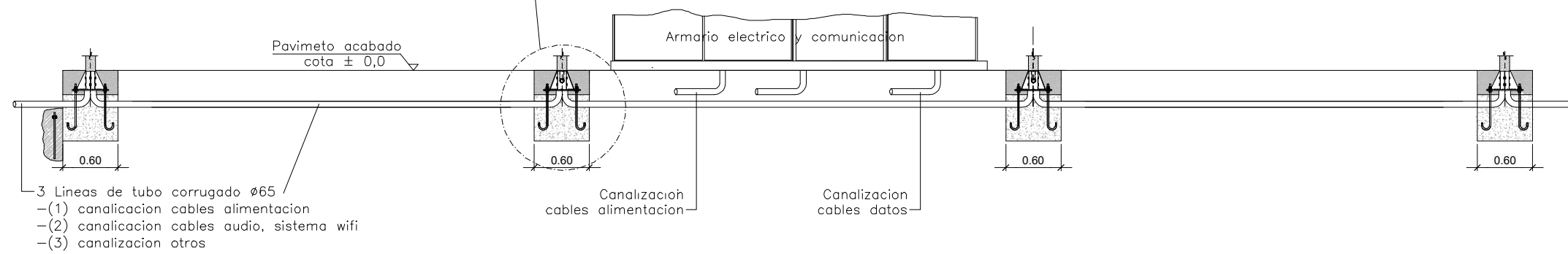


PLANTA

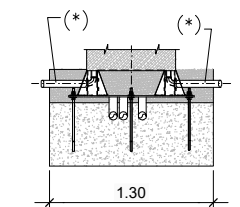
SECCIÓN



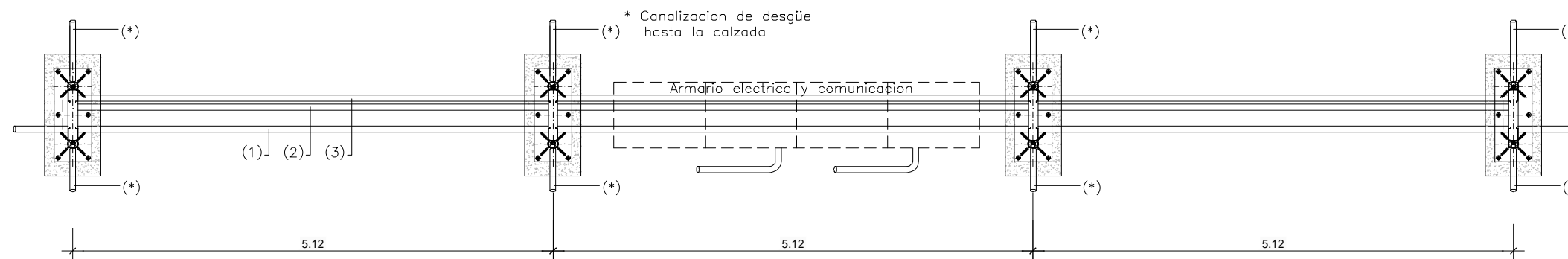
PLACA DE ANCLAJE



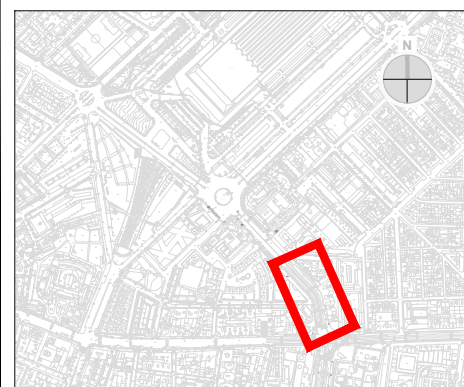
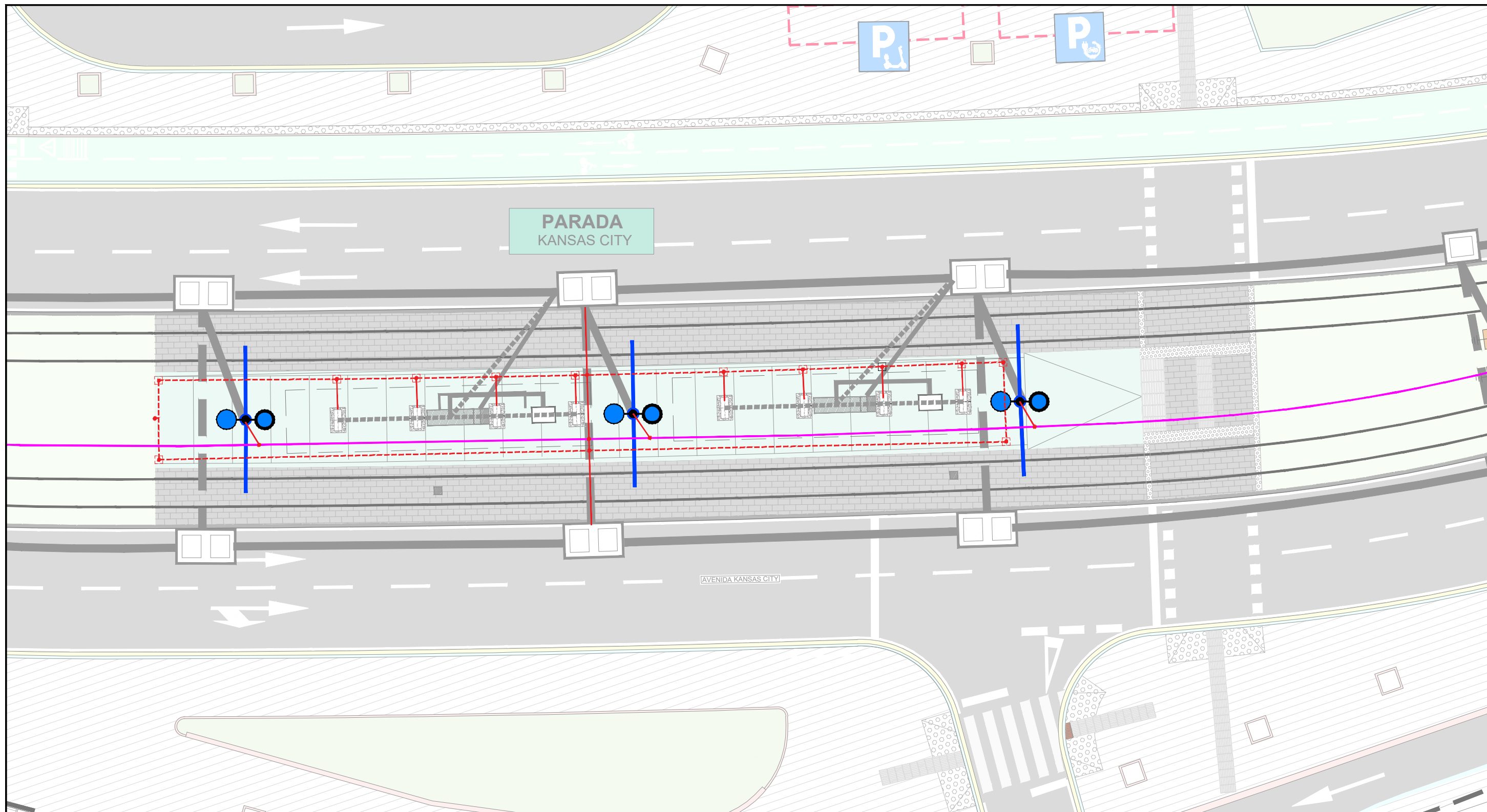
VISTA FRONTAL
ESCALA 1/35







VISTA LATERAL POSTE
ESCALA 1/35



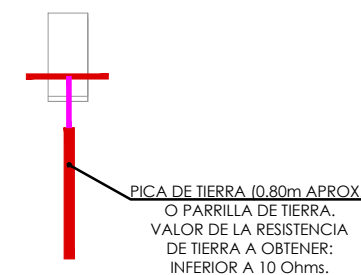
VISTA EN PLANTA
ESCALA 1/35

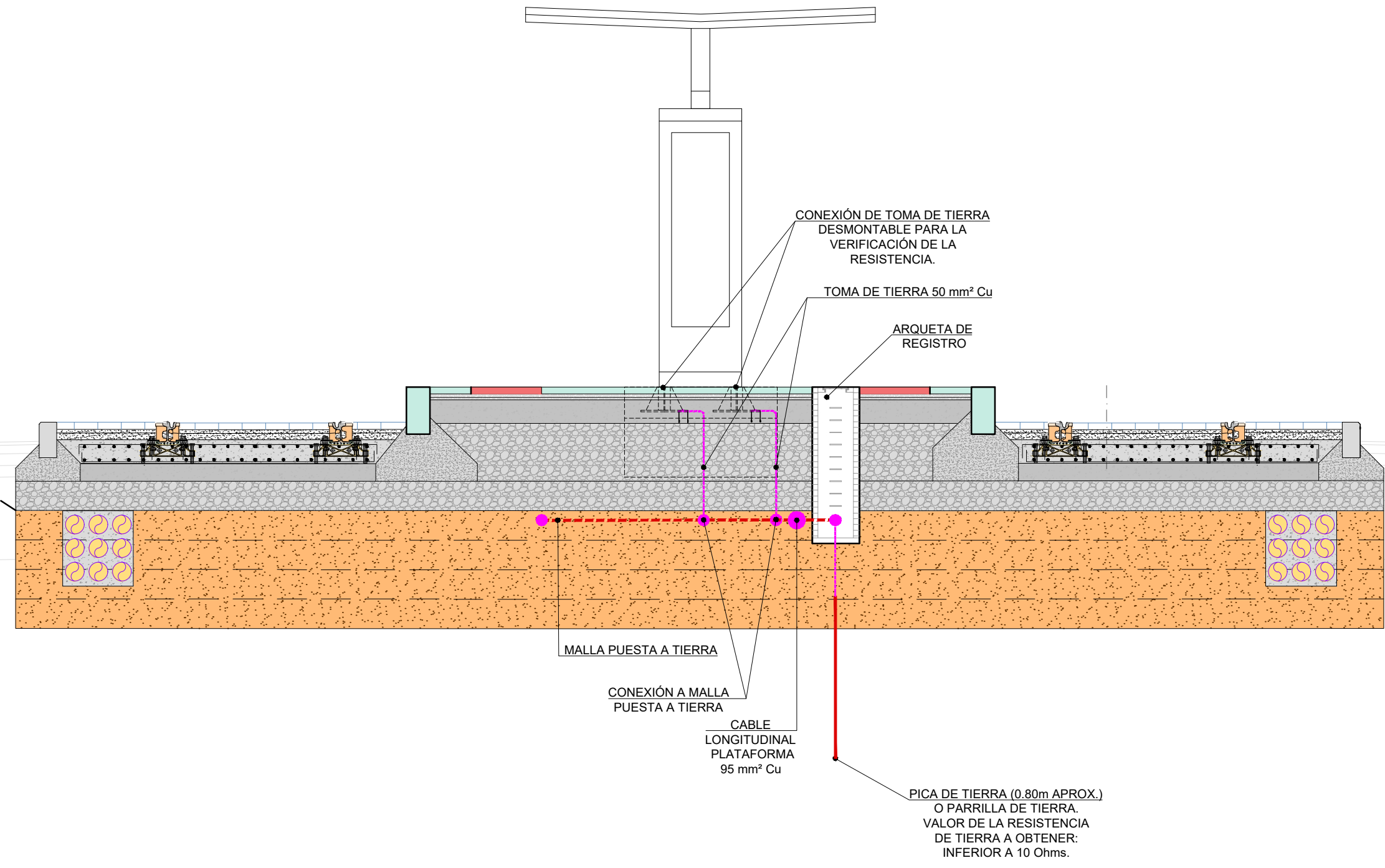


LEYENDA

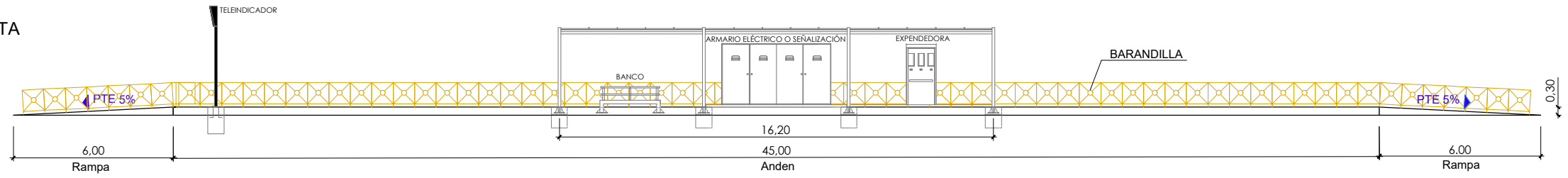
-  CABLE LONGITUDINAL PLATAFORMA 95mmCu
-  CABLE LONGITUDINAL ANDEN 50mmCu
-  CONEXIÓN A MALLA
-  ARQUETA CON PICA DE TIERRA

ARQUETA CON PICA DE TIERRA

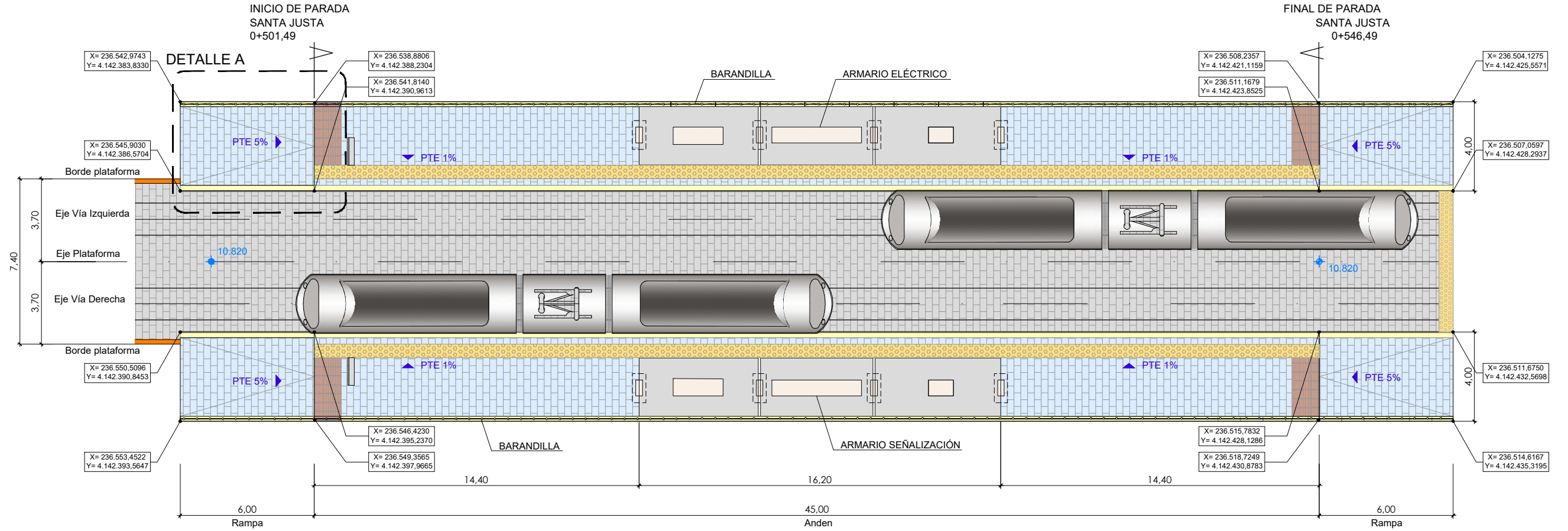




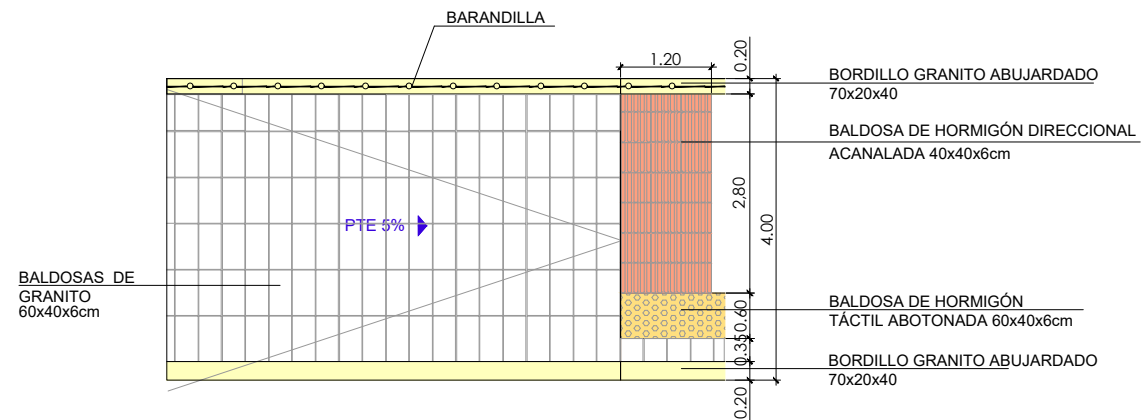
ALZADO
PARADA SANTA JUSTA
 ESCALA 1/125



PLANTA
PARADA SANTA JUSTA
 ESCALA 1/125



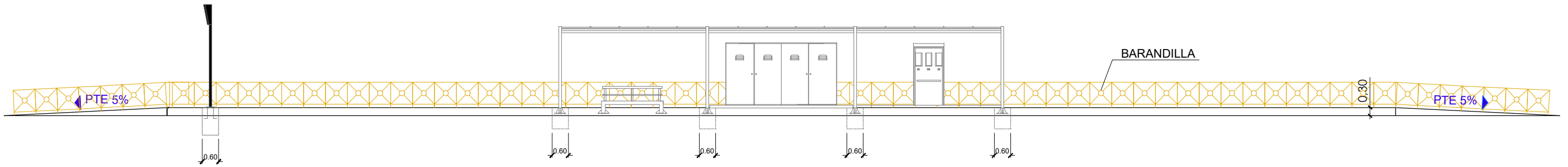
DETALLE A
 ESCALA 1/60



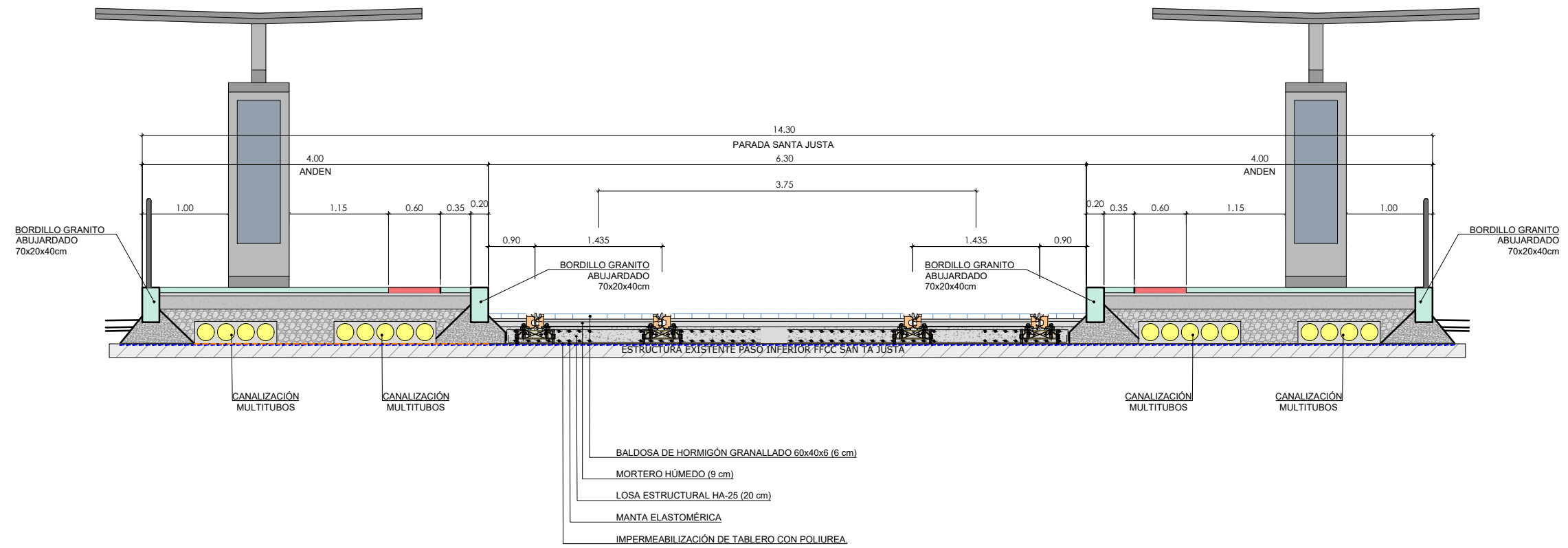
LEYENDA

- BORDILLO GRANITO ABUJARDADO 70x20x40cm
- PAVIMENTO DE BALDOSAS DE GRANITO 60x40x6cm.
- PLATAFORMA TRANVIÁRIA DE BALDOSAS DE GRANITO 60x40x6cm.

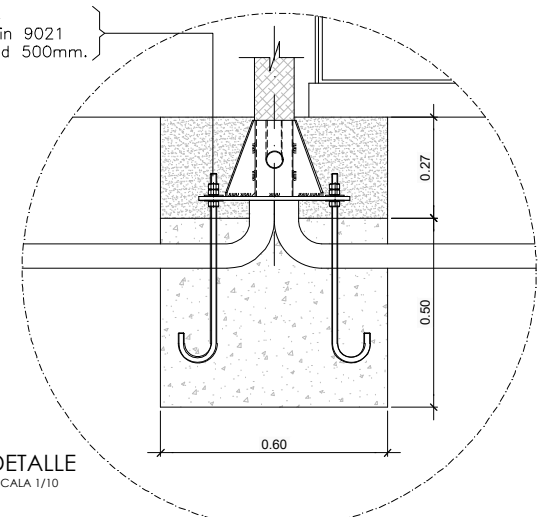
SECCIÓN 1-1
ESCALA 1/75



SECCIÓN 2-2
ESCALA 1/60

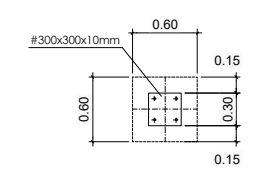


Tuercas M16 Din 934
Arandela para M16 Din 9021
Perno de M16 longitud 500mm.

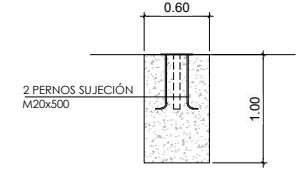


DETALLE
ESCALA 1/10

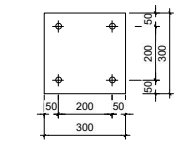
CIMENTACIÓN DE TELEINDICADORES
ESCALA 1/35



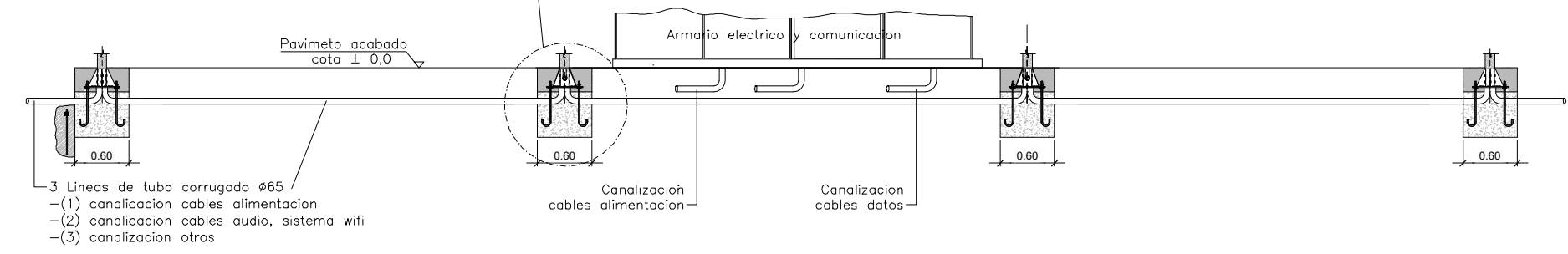
PLANTA



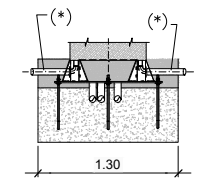
SECCIÓN



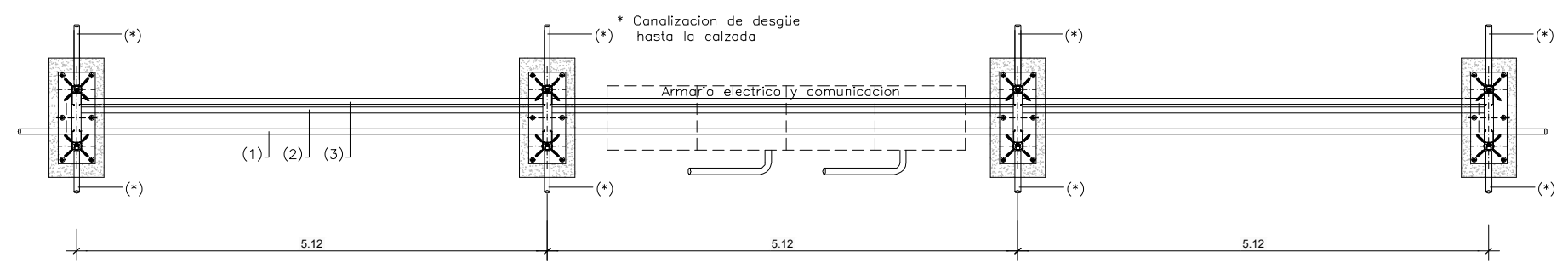
PLACA DE ANCLAJE



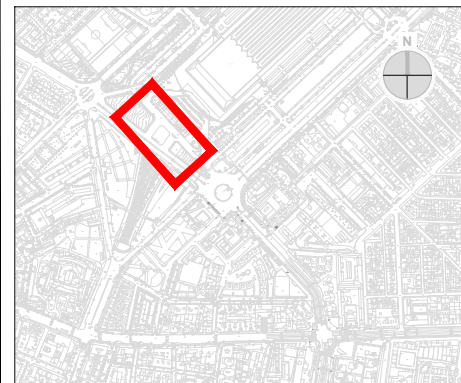
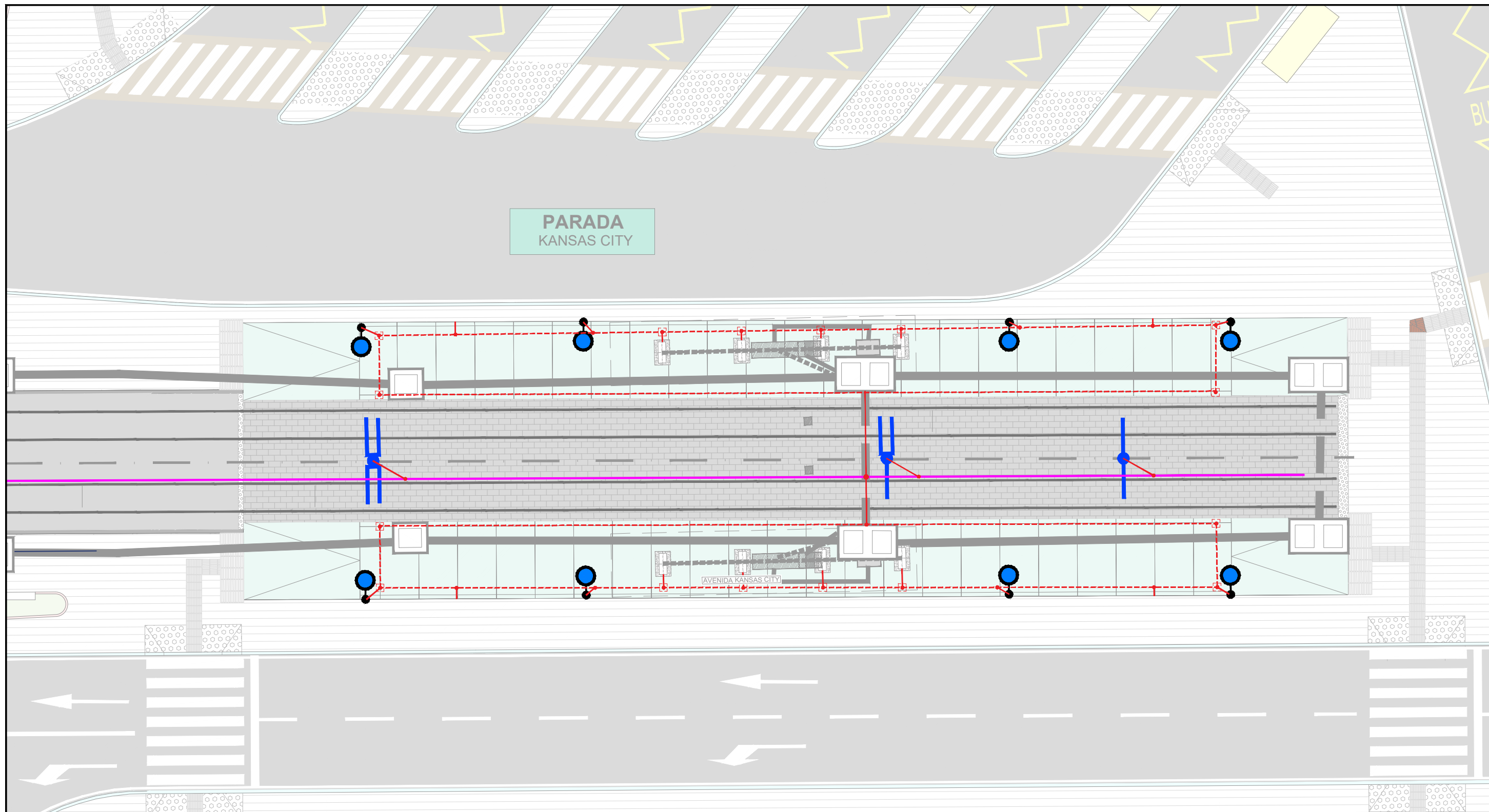
VISTA FRONTAL
ESCALA 1/35







VISTA LATERAL POSTE
ESCALA 1/35



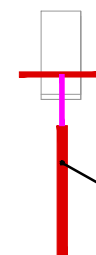
VISTA EN PLANTA
ESCALA 1/35



LEYENDA

-  CABLE LONGITUDINAL PLATAFORMA 95mmCu
-  CABLE LONGITUDINAL ANDEN 50mmCu
-  CONEXIÓN A MALLA
-  ARQUETA CON PICA DE TIERRA

ARQUETA CON PICA DE TIERRA



PICA DE TIERRA (0,80m APROX.)
O PARRILLA DE TIERRA.
VALOR DE LA RESISTENCIA
DE TIERRA A OBTENER:
INFERIOR A 10 Ohms.

